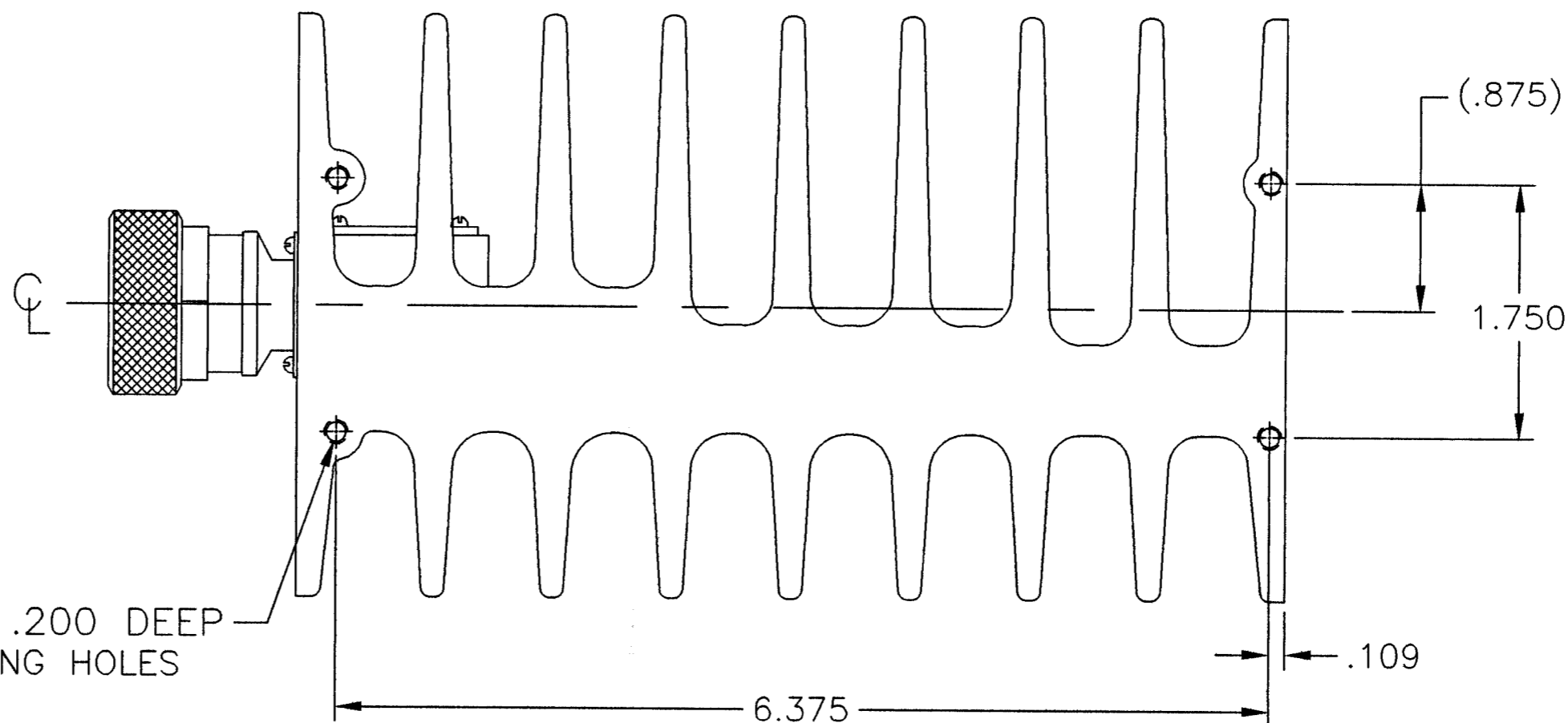
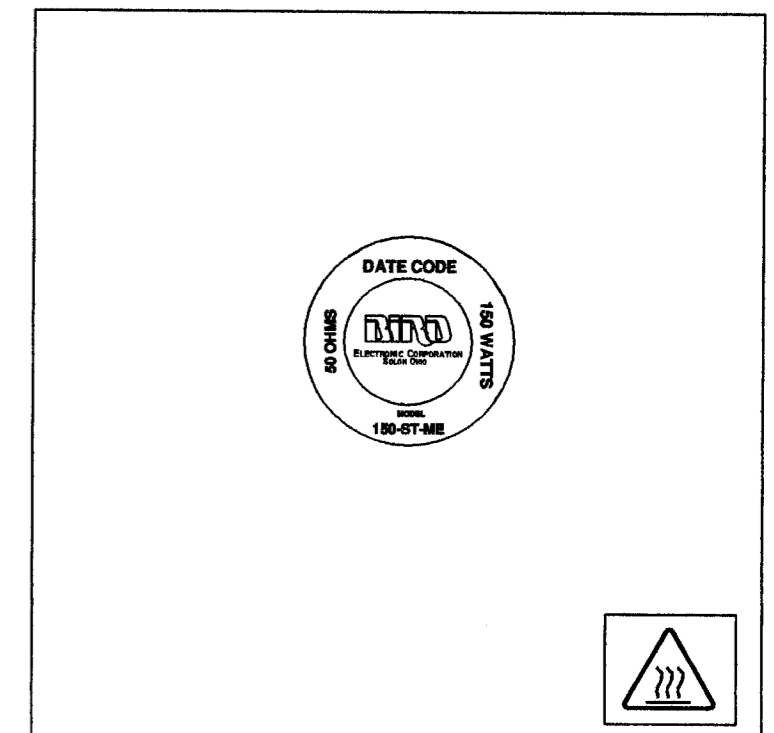
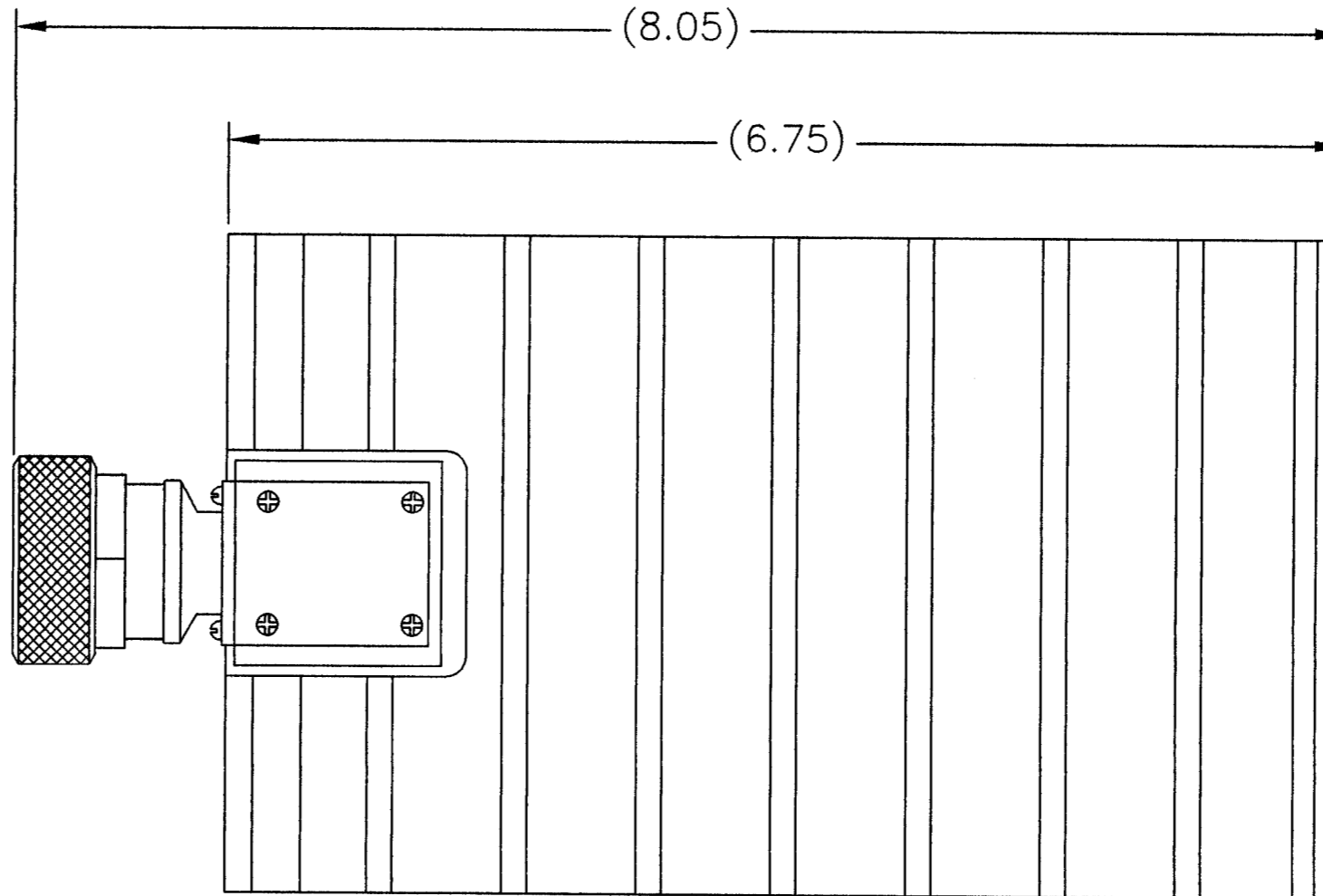
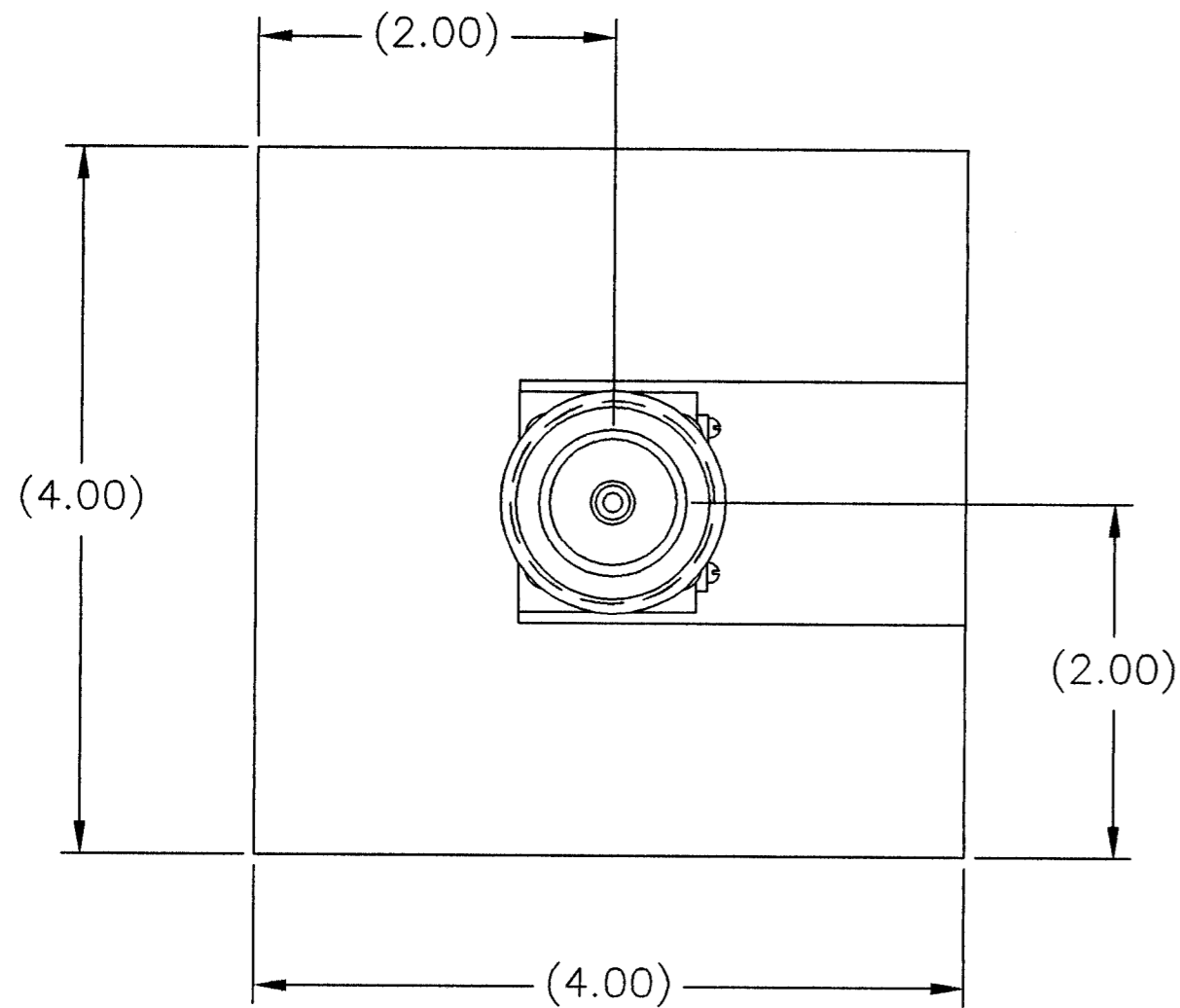


SPECIFICATIONS:
 IMPEDANCE: 50 OHMS NOMINAL
 FREQUENCY RANGE: DC TO 2.4GHz
 VSWR: DC TO 1GHz AT 1.10:1 MAX.
 1GHz TO 2.4GHz AT 1.25:1 MAX.
 POWER RATING: 150 WATTS MAX. @ 40°C.
 180 WATTS MAX. @ 25°C.
 COOLING FIN: ALUMINUM, BLACK ANODIZED
 HEAT SPREADER: ALUMINUM, TRI-ALLOY PLATED
 CONNECTOR: 7/16 MALE, TRI-ALLOY PLATED
 OPERATING POSITION: VERTICALLY
 NOMINAL SIZE: APPROX. 8.05" L X 4" SQ.
 WEIGHT: APPROX. 5 LBS.


REVISIONS		DWG. NO.	SHEET	REV
ZONE	REV	DESCRIPTION	DATE	APPROVED
A		NEW DRAWING RELEASE PER DMD DMR	11-15-04	MKW



4x 8-32UNC-2B X .200 DEEP MOUNTING HOLES

- NOTES:
- ☑ 1. PART MUST BE BURR FREE.
 - ☑ 2. CHAMFER 1st THREAD.
 - ☑ 3. 63 MICROINCH UNLESS OTHERWISE SPECIFIED.
 - ☐ 4. PER BPS _____.
 - ☑ 5. .005 RADIUS ON ALL INSIDE & OUTSIDE CORNERS UNLESS OTHERWISE SPECIFIED.

DIMENSIONS HEREON ARE FOR CUSTOMER CONVENIENCE AND REFERENCE ONLY. TOLERANCE TO BE APPLIED ONLY WHERE INDIVIDUALLY STATED ON THE RESPECTIVE DIMENSION. -DO NOT SCALE DRAWING-

UNLESS OTHERWISE SPECIFIED DIMENSIONS ARE IN INCHES TOLERANCES ARE:		MILLIMETERS		THIS DRAWING IS THE PROPERTY OF THE BIRD ELECTRONIC CORPORATION. THE DESIGNS AND SPECIFICATIONS DISCLOSED HEREON ARE PROPRIETARY AND SHALL NOT BE REPRODUCED, NOR COPIED, NOR USED AS THE BASIS FOR THE MANUFACTURE OR SALE OF APPARATUS OR DEVICES WITHOUT THEIR EXPRESS WRITTEN CONSENT.
FRACTIONS	DECIMALS	ANGLES		
± 1/64	.XX = ± .010 .XXX = ± .005	± 30°	.X = ± .4 .XX = ± .12	 BIRD Electronic Corporation Cleveland (Solon) Ohio USA
DO NOT SCALE DRAWING				
MATERIAL	APPROVALS	DATE	TITLE	TERMINATION, 7/16 MALE, 150W SIZE FSCM NO. 70998 DWG. NO. 150-ST-ME SCALE 1:1 COMM CODE LD1 SHEET 1 OF 1
FINISH	DRAWN DMD	11-11-04		
	CHECKED MKW	11-16-04		
	APPROVED MKW	11-16-04		